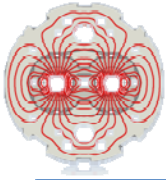


MMM - 23 March, 2009

Status Report of Magnet Work Week 12 / 2009

Francesco Bertinelli - TE/MSC

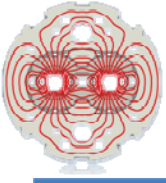
On behalf of - and with several contributions from - surface and IC teams



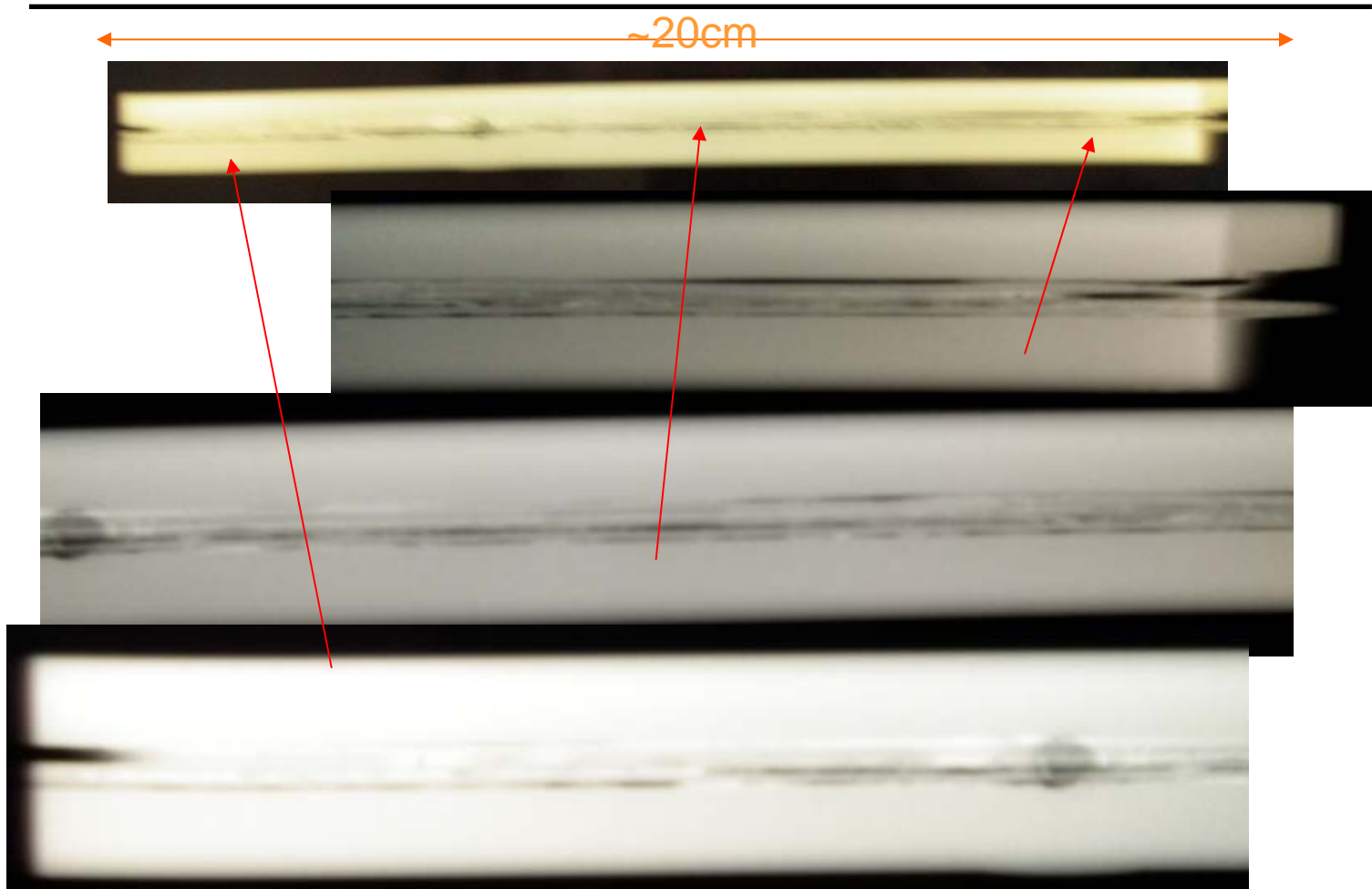
Surface News Week 12/2009

	End activity week 5 - 2009		End activity week 6 - 2009		End activity week 7 - 2009	
	Magnets	Quantity	Magnets	Quantity	Magnets	Quantity
Cryostating	2428-3118-SSS221	3	2483-2443-SSS195	3	2085-2103-2441-SSS225	4
Cold testing	2427-2739	2	1085-SSS369	2	2421-2429-2440-SSS221	4
Stripping	2432-SSS243	2	2739	1	1085-SSS369	2
Fiducialization					1085	1
Beam screen integration	2434-2436	2	2399-SSS055	2	2432	1
Tunnel preparation	2422-2624	2	2342-2399-2434-2436-SSS055	5	2432	1
Installation (=pose)	2624	1	2484-2436	2	2342	1
	End activity week 8 - 2009		End activity week 9 - 2009		End activity week 10 - 2009	
	Magnets	Quantity	Magnets	Quantity	Magnets	Quantity
Cryostating	1071-1092-1099-2192-SSS227	5	2108-SSS208-(2431-2442=spares)	4	(2437-2438=spares)	2
Cold testing	2418-2435-2446-3118-SSS195-SSS208	6	2103-2444-2427-2690-SSS006-SSS225-SSS227	7	2429-2428-2441-2868-SSS227	5
Stripping	2421-2429-SSS221	3	2252-2418-2435-2440-SSS195-SSS203	6	2427-2444-SSS006	3
Fiducialization			2252-2418-2440-SSS203	4	2427-2435-2444-SSS006-SSS195	5
Beam screen integration	2739-SSS243	2	2421-2429-SSS369	3	2252-2418-2435-2440	4
Tunnel preparation	SSS243	1	2422-2739	2	2421-2440	2
Installation (=pose)	2432-2899	2	2422-2739-SSS055-SSS243	4	2421	1
	End activity week 11 - 2009		End activity week 12 - 2009			
	Magnets	Quantity	Magnets	Quantity		
Cryostating	SSS219 -(2445=spare)	2	2524=spare	1		
Cold testing	1092-1099-2108-2192-2433-SSS208	6	1071-2035-(2437-2438-2442=spares)	5		
Stripping	2103-2428-2441-2443-2446-2690-3118	7	1071-1092-1099-2108-2192-SSS225-SSS227-SSS364	8		
Fiducialization	1085-2428-2441-2446-2690-3118	6	1092-2103-2443-SSS225-SSS227-SSS364	6		
Beam screen integration	1085-2427-2444-3118-SSS203-SSS221	6	2103-2428-2441-2446-2690-SSS195	6		
Tunnel preparation	2252-2429-2418-2435-SSS221-SSS369	6	1085-2427-2428-2444-2690-3118	6		
Installation (=pose)	2252-2418-2429-2435-2440-SSS221-SSS369	7	1085-2427-2428-2444-2690-3118	6		

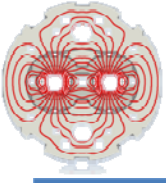
Courtesy A. Russo



SSS006



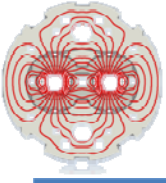
Courtesy H. Prin
C. Urpin



MB2446: NCR 992015



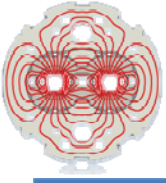
Courtesy J. Pereira



MB2103: NCR 992017



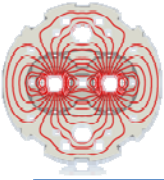
Courtesy J. Pereira



UJ68



Courtesy K. Foraz



DN200

Week	Total	Sector 1-2	Sector 3-4	Sector 5-6	Sector 6-7	Remarks
6	2		2			Surface
7	11		9			Surface
8	34	9	11	3		Surface & Tunnel
9	82	20	16	12		Surface & Tunnel
10	167	34	27	24		Surface & Tunnel
11	264	36	5	30	26	
12	347			56	27	
13	429			43	39	
14	489				60	
15	535	30			16	
16	587	28	24			
17	672	11	74			
SUM		168	168	168	168	
Contract		DUBNA	S-108	S-107	S-108	

Courtesy JC. Perez